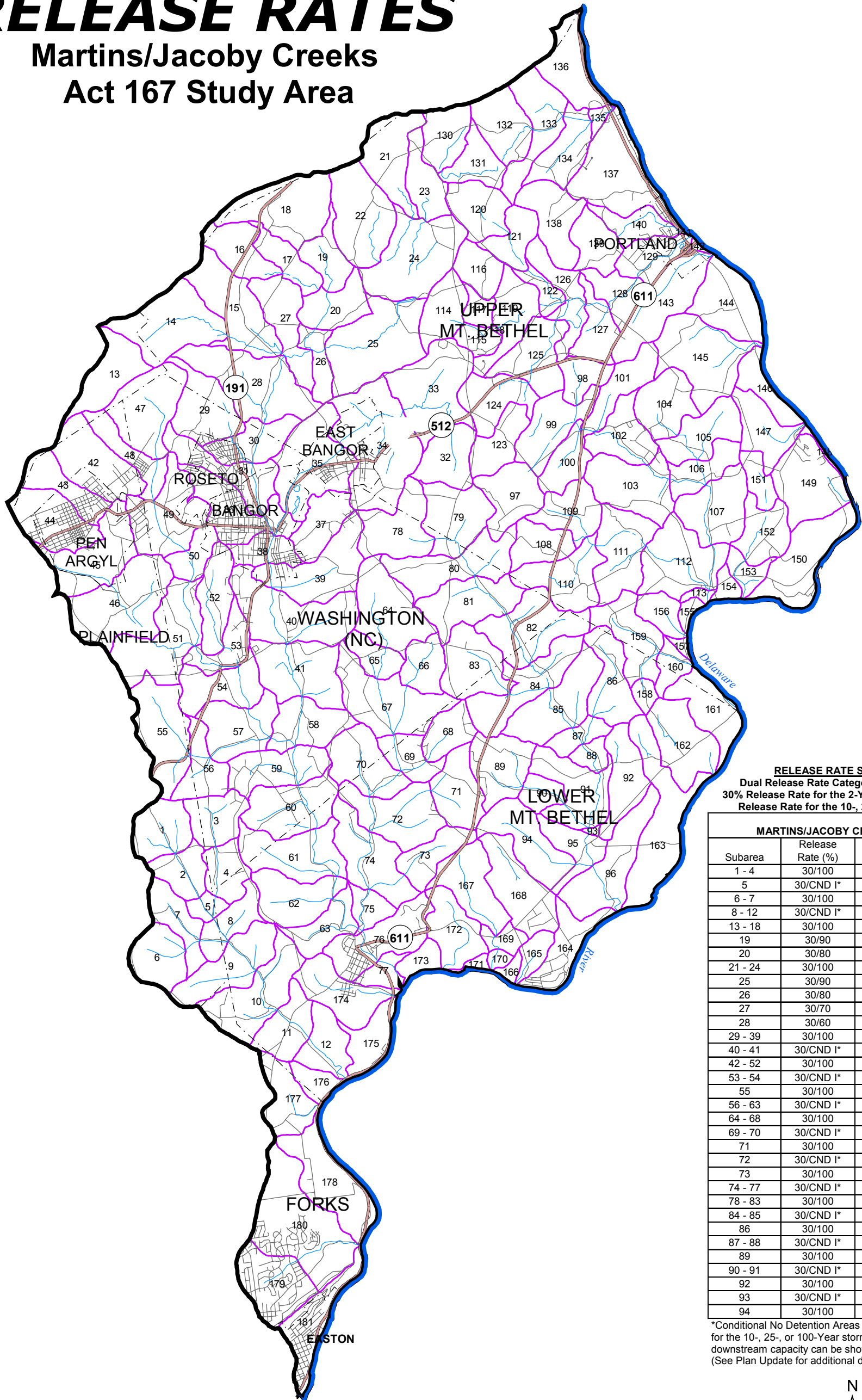


# MAP 7 RELEASE RATES

## Martins/Jacoby Creeks Act 167 Study Area

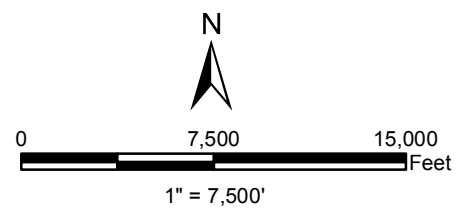


**RELEASE RATE SUMMARY TABLE**  
Dual Release Rate Categories (30/-) define a 30% Release Rate for the 2-Year storm and the indicated Release Rate for the 10-, 25- and 100-Year storms.

MARTINS/JACOBY CREEKS STUDY AREA			
Subarea	Release Rate (%)	Subarea	Release Rate (%)
1 - 4	30/100	95 - 96	30/CND I*
5	30/CND I*	97 - 105	30/100
6 - 7	30/100	106 - 107	30/CND I*
8 - 12	30/CND I*	108 - 110	30/100
13 - 18	30/100	111 - 113	30/CND I*
19	30/90	114 - 118	30/100
20	30/80	119	30/80
21 - 24	30/100	120	30/100
25	30/90	121	30/90
26	30/80	122	30/80
27	30/70	123	30/100
28	30/60	124	30/90
29 - 39	30/100	125	30/80
40 - 41	30/CND I*	126	30/70
42 - 52	30/100	127 - 128	30/60
53 - 54	30/CND I*	129	30/100
55	30/100	130 - 131	30/80
56 - 63	30/CND I*	132 - 134	30/100
64 - 68	30/100	135	30/CND I*
69 - 70	30/CND I*	136 - 137	30/CND II*
71	30/100	138 - 140	30/100
72	30/CND I*	141 - 150	30/CND II*
73	30/100	151	30/100
74 - 77	30/CND I*	152 - 153	30/CND I*
78 - 83	30/100	154 - 157	30/CND II*
84 - 85	30/CND I*	158 - 159	30/100
86	30/100	160	30/CND I*
87 - 88	30/CND I*	161 - 166	30/CND II*
89	30/100	167 - 168	30/100
90 - 91	30/CND I*	169 - 170	30/CND I*
92	30/100	171 - 178	30/CND II*
93	30/CND I*	179 - 180	30/100
94	30/100	181	30/CND II*

\*Conditional No Detention Areas do not need detention controls for the 10-, 25-, or 100-Year storms provided that adequate downstream capacity can be shown for increased peak flows. (See Plan Update for additional details).

- 23 Subarea Boundaries
- Watershed Boundary
- Municipal Boundaries
- Major Roads
- Minor/Other Roads
- River
- Streams/Rivers



Source: Lehigh Valley Planning Commission

**LEHIGH VALLEY PLANNING COMMISSION**  
961 Marcon Boulevard, Suite 310  
Allentown, PA 18109-9368  
(610) 264-4544

