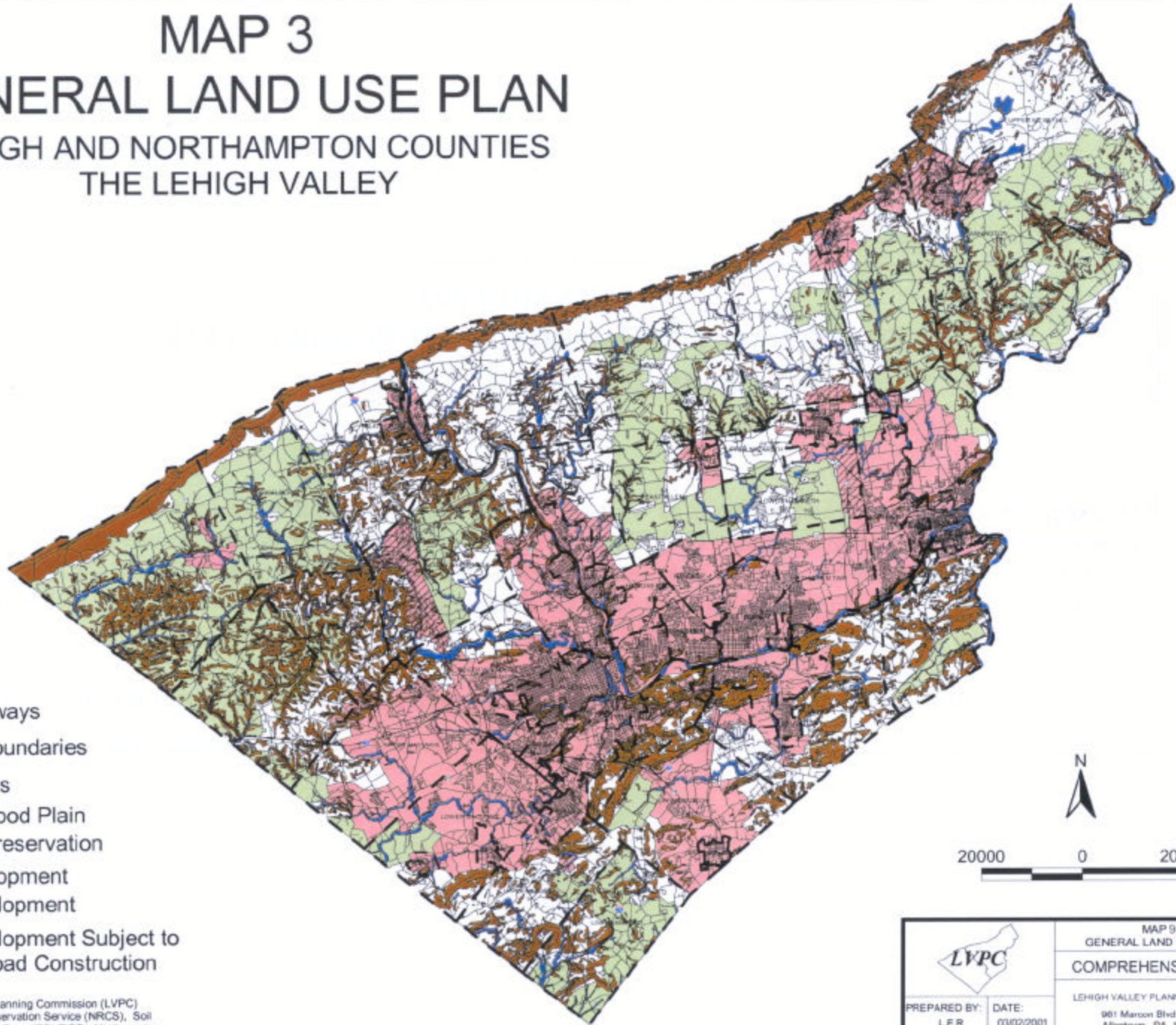


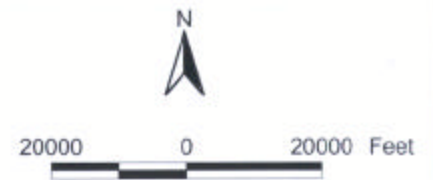
MAP 3

GENERAL LAND USE PLAN


LEHIGH AND NORTHAMPTON COUNTIES THE LEHIGH VALLEY



-  Major Roadways
-  Municipal Boundaries
-  Steep Slopes
-  100-Year Flood Plain
-  Farmland Preservation
-  Rural Development
-  Urban Development
-  Urban Development Subject to Sewer & Road Construction



Prepared by the Lehigh Valley Planning Commission (LVPC)
 Source: Natural Resources Conservation Service (NRCS), Soil
 Survey Geographic Data Base (SSURGO); Northampton
 County Assessment Office; FEMA; LVPC Records

		MAP 3 GENERAL LAND USE PLAN	
		COMPREHENSIVE PLAN	
PREPARED BY: L.E.R.	DATE: 03/02/2001	LEHIGH VALLEY PLANNING COMMISSION 901 Maroon Blvd., Suite 310 Allentown, PA 18103-9297 (610) 264-4544 Source: LVPC Records, PennDOT	
PROJECT NO: 81-00	SCALE: As Shown		