

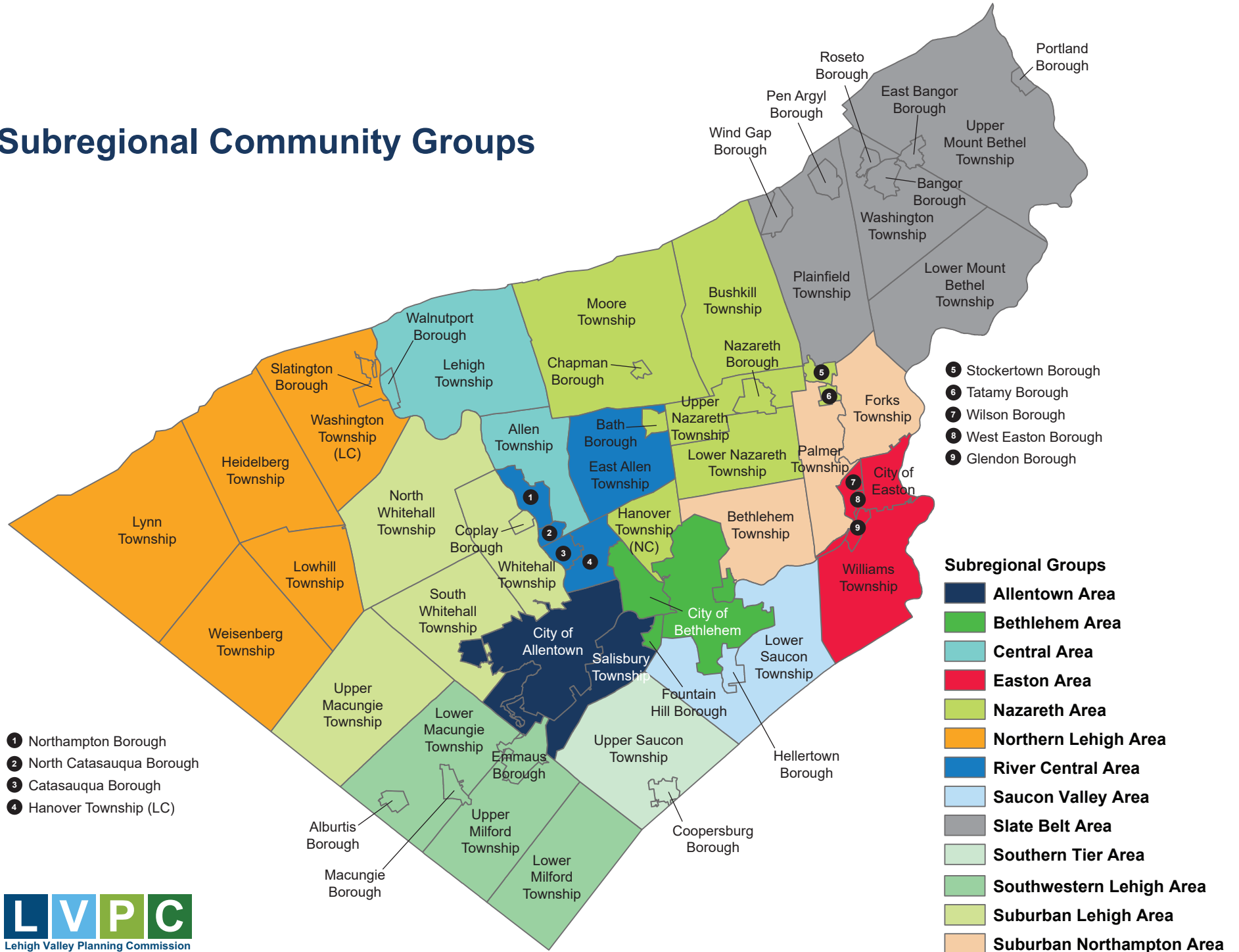


planning for the new normal.



**2020 Subregional + Municipal Subdivision +
Land Development Activity**

Subregional Community Groups



- 1 Northampton Borough
- 2 North Catasauqua Borough
- 3 Catasauqua Borough
- 4 Hanover Township (LC)

2020 Subregional + Municipal Subdivision + Land Development Activity



Legend: AL = Assisted-Living; APT = Apartment; CONDO = Condominium; PRD = Planned Residential Development; TOWN = Townhouse; SFD = Single-Family Detached; TW = Twin; AG = Agriculture; COMM = Commercial; IND = Industrial (Warehouse is a subset of this); OFF = Office; PUB = Public/Quasi-public; REC = Recreation; RET = Retail; TRANS = Transportation

Allentown Area

Municipality	Residential Units								Non-Residential Square Feet								
	AL	APT	CONDO	PRD	TOWN	SFD	TW	Total	AG	COMM	IND	OFF	PUB	REC	RET	TRANS	Total
City of Allentown	-	725	-	-	3	42	10	780	-	33,154	488,546	335,034	86,974	-	24,194	-	967,902
Salisbury Township	-	-	-	-	-	5	4	9	-	9,154	-	24,300	-	3,306	-	-	36,760
Subregion Total	-	725	-	-	3	47	14	789	-	42,308	488,546	359,334	86,974	3,306	24,194	-	1,004,662

Bethlehem Area

Municipality	Residential Units								Non-Residential Square Feet								
	AL	APT	CONDO	PRD	TOWN	SFD	TW	Total	AG	COMM	IND	OFF	PUB	REC	RET	TRANS	Total
City of Bethlehem	-	176	-	-	16	4	8	204	-	433,030	343,603	-	73,300	-	-	-	849,933
Fountain Hill Borough	-	18	-	-	-	-	-	18	-	-	-	-	-	-	-	-	-
Freemansburg Borough	-	-	-	-	-	-	-	-	-	-	-	-	-	-	-	-	-
Subregion Total	-	194	-	-	16	4	8	222	-	433,030	343,603	-	73,300	-	-	-	849,933

Central Area

Municipality	Residential Units								Non-Residential Square Feet								
	AL	APT	CONDO	PRD	TOWN	SFD	TW	Total	AG	COMM	IND	OFF	PUB	REC	RET	TRANS	Total
Allen Township	-	-	-	-	-	9	-	9	-	-	2,251,250	-	-	-	-	-	2,251,250
Lehigh Township	-	-	-	-	-	5	6	11	-	-	-	-	1,320	-	-	-	1,320
Walnutport Borough	-	-	-	-	-	-	4	4	-	14,976	-	-	-	-	-	-	14,976
Subregion Total	-	-	-	-	-	14	10	24	-	14,976	2,251,250	-	1,320	-	-	-	2,267,546

Easton Area

Municipality	Residential Units								Non-Residential Square Feet								
	AL	APT	CONDO	PRD	TOWN	SFD	TW	Total	AG	COMM	IND	OFF	PUB	REC	RET	TRANS	Total
City of Easton	-	270	-	-	-	-	-	270	-	1,310	-	-	100,589	10,499	2,636	27,724	142,758
Glendon Borough	-	-	-	-	-	-	-	-	-	-	-	-	-	-	-	-	-
West Easton Borough	-	-	-	-	-	-	-	-	-	-	-	-	-	-	-	-	-
Williams Township	-	-	-	-	-	1	-	1	-	-	-	-	-	-	-	-	-
Wilson Borough	-	-	-	-	-	-	-	-	-	-	-	-	-	-	-	-	-
Subregion Total	-	270	-	-	-	1	-	271	-	1,310	-	-	100,589	10,499	2,636	27,724	142,758

Legend: AL = Assisted-Living; APT = Apartment; CONDO = Condominium; PRD = Planned Residential Development; TOWN = Townhouse; SFD = Single-Family Detached; TW = Twin; AG = Agriculture; COMM = Commercial; IND = Industrial (Warehouse is a subset of this); OFF = Office; PUB = Public/Quasi-public; REC = Recreation; RET = Retail; TRANS = Transportation

Nazareth Area

Municipality	Residential Units								Non-Residential Square Feet								
	AL	APT	CONDO	PRD	TOWN	SFD	TW	Total	AG	COMM	IND	OFF	PUB	REC	RET	TRANS	Total
Bath Borough	-	-	-	-	-	-	-	-	-	-	-	-	-	-	-	-	-
Bushkill Township	-	-	-	-	-	45	-	45	-	-	-	-	25,418	-	-	-	25,418
Chapman Borough	-	-	-	-	-	-	-	-	-	-	-	-	-	-	-	-	-
Hanover Township NC	-	-	-	-	-	-	-	-	-	-	17,742	63,610	33,350	-	-	-	114,702
Lower Nazareth Township	-	-	-	-	-	297	-	297	-	28,243	784,694	-	411,326	42,576	-	-	1,266,839
Moore Township	-	-	-	-	-	-	-	-	-	1,800	-	-	-	-	-	-	1,800
Nazareth Borough	-	-	-	-	8	-	-	8	-	-	-	-	-	-	-	-	-
Stockertown Borough	-	-	-	-	-	61	-	61	-	-	-	-	-	-	-	-	-
Tatamy Borough	-	-	-	-	-	-	-	-	-	-	200,112	-	-	-	-	-	200,112
Upper Nazareth Township	-	-	-	40	-	-	-	40	-	-	-	-	-	-	-	-	-
Subregion Total	-	-	-	40	8	403	0	451	-	30,043	1,002,548	63,610	470,094	42,576	-	-	1,608,871

Northern Lehigh Area

Municipality	Residential Units								Non-Residential Square Feet								
	AL	APT	CONDO	PRD	TOWN	SFD	TW	Total	AG	COMM	IND	OFF	PUB	REC	RET	TRANS	Total
Heidelberg Township	-	-	-	-	-	-	-	-	-	-	-	-	-	-	-	-	-
Lowhill Township	-	-	-	-	-	-	-	-	-	-	-	-	-	-	-	-	-
Lynn Township	-	-	-	-	-	2	-	2	-	-	-	-	-	-	-	-	-
Slatington Borough	-	-	-	-	-	-	-	-	-	-	-	-	-	-	-	-	-
Washington Township LC	-	-	-	-	-	2	-	2	-	-	-	-	-	-	-	-	-
Weisenberg Township	-	-	-	-	-	21	-	21	20,160	20,180	105,000	-	-	-	-	-	145,340
Subregion Total	-	-	-	-	-	25	-	25	20,160	20,180	105,000	-	-	-	-	-	145,340

River Central Area

Municipality	Residential Units								Non-Residential Square Feet								
	AL	APT	CONDO	PRD	TOWN	SFD	TW	Total	AG	COMM	IND	OFF	PUB	REC	RET	TRANS	Total
Catasauqua Borough	-	-	-	-	-	1	-	1	-	-	-	-	1,011	-	-	-	1,011
East Allen Township	-	-	-	-	35	47	-	82	-	-	-	-	-	-	-	-	-
Hanover Township LC	-	-	-	-	-	-	-	-	-	15,400	553,600	-	-	-	-	26,000	595,000
North Catasauqua Borough	-	-	-	-	-	-	-	-	-	-	-	-	-	-	-	-	-
Northampton Borough	-	-	-	-	40	50	-	90	-	-	-	-	-	-	-	-	-
Subregion Total	-	-	-	-	75	98	-	173	-	15,400	553,600	-	1,011	-	-	26,000	596,011

Legend: AL = Assisted-Living; APT = Apartment; CONDO = Condominium; PRD = Planned Residential Development; TOWN = Townhouse; SFD = Single-Family Detached; TW = Twin; AG = Agriculture; COMM = Commercial; IND = Industrial (Warehouse is a subset of this); OFF = Office; PUB = Public/Quasi-public; REC = Recreation; RET = Retail; TRANS = Transportation



Saucon Valley Area

Municipality	Residential Units								Non-Residential Square Feet								
	AL	APT	CONDO	PRD	TOWN	SFD	TW	Total	AG	COMM	IND	OFF	PUB	REC	RET	TRANS	Total
Hellertown Borough	-	75	-	-	4	1	4	84	-	11,840	-	3,190	-	-	-	-	15,030
Lower Saucon Township	-	-	-	-	27	45	10	82	-	-	-	6,480	-	124,672	-	-	131,152
Subregion Total	-	75	-	-	31	46	14	166	-	11,840	-	9,670	-	124,672	-	-	146,182

Slate Belt Area

Municipality	Residential Units								Non-Residential Square Feet								
	AL	APT	CONDO	PRD	TOWN	SFD	TW	Total	AG	COMM	IND	OFF	PUB	REC	RET	TRANS	Total
Bangor Borough	-	-	-	-	-	-	-	-	-	-	-	-	-	-	-	-	-
East Bangor Borough	-	-	-	-	-	-	-	-	-	-	-	-	-	-	-	-	-
Lower Mount Bethel Township	-	-	-	-	-	-	-	-	-	-	-	-	-	-	-	-	-
Pen Argyl Borough	-	-	-	-	14	-	-	14	-	-	-	-	-	-	-	-	-
Plainfield Township	-	-	-	-	-	1	-	1	-	2,753	180,125	-	-	-	-	-	-
Portland Borough	-	-	-	-	-	-	-	-	-	-	-	-	-	-	-	-	-
Roseto Borough	-	-	-	-	-	-	-	-	-	-	-	-	-	-	-	-	-
Upper Mount Bethel Township	-	-	-	-	-	8	-	8	-	-	-	-	-	-	-	-	-
Washington Township NC	-	-	-	-	-	-	-	-	-	-	-	-	-	-	-	-	-
Wind Gap Borough	-	-	-	-	-	-	-	-	-	-	37,500	-	-	-	-	-	37,500
Subregion Total	-	-	-	-	14	9	-	23	-	2,753	217,625	-	-	-	-	-	37,500

Southern Tier Area

Municipality	Residential Units								Non-Residential Square Feet								
	AL	APT	CONDO	PRD	TOWN	SFD	TW	Total	AG	COMM	IND	OFF	PUB	REC	RET	TRANS	Total
Coopersburg Borough	-	12	-	-	-	-	-	12	-	-	-	-	-	-	9,933	-	9,933
Upper Saucon Township	-	-	-	-	-	128	8	136	-	8,630	-	37,500	13,720	-	-	-	59,850
Subregion Total	-	12	-	-	-	128	8	148	-	8,630	-	37,500	13,720	-	9,933	-	69,783

Southwest Lehigh Area

Municipality	Residential Units								Non-Residential Square Feet								
	AL	APT	CONDO	PRD	TOWN	SFD	TW	Total	AG	COMM	IND	OFF	PUB	REC	RET	TRANS	Total
Alburtis Borough	-	-	-	-	-	-	-	-	-	-	-	-	-	-	-	-	-
Emmaus Borough	-	158	-	-	75	22	-	255	-	6,500	20,000	-	-	-	-	-	26,500
Lower Macungie Township	-	180	-	-	112	2	2	296	-	12,802	113,000	83,983	-	-	36,252	-	246,037
Lower Milford Township	-	-	-	-	-	-	-	-	-	-	12,000	-	-	-	-	-	12,000
Macungie Borough	-	-	-	-	49	46	-	95	-	8,300	-	-	-	-	-	-	8,300
Upper Milford Township	-	-	-	-	-	-	-	-	-	10,720	-	-	-	-	-	-	10,720
Subregion Total	-	338	-	-	236	70	2	646	-	38,322	145,000	83,983	-	-	36,252	-	303,557

Legend: AL = Assisted-Living; APT = Apartment; CONDO = Condominium; PRD = Planned Residential Development; TOWN = Townhouse; SFD = Single-Family Detached; TW = Twin; AG = Agriculture; COMM = Commercial; IND = Industrial (Warehouse is a subset of this); OFF = Office; PUB = Public/Quasi-public; REC = Recreation; RET = Retail; TRANS = Transportation



Suburban Lehigh Area

Municipality	Residential Units								Non-Residential Square Feet								
	AL	APT	CONDO	PRD	TOWN	SFD	TW	Total	AG	COMM	IND	OFF	PUB	REC	RET	TRANS	Total
Coplay Borough	-	48	-	-	-	-	-	48	-	4,680	-	-	-	-	-	-	4,680
North Whitehall Township	-	-	-	-	-	55	-	55	-	-	-	-	17,869	-	-	-	17,869
South Whitehall Township	-	468	-	-	69	187	220	944	-	165,711	907,205	-	142,000	-	-	-	1,214,916
Upper Macungie Township	-	289	-	-	332	-	-	621	-	148,735	944,080	21,609	-	-	-	-	1,114,424
Whitehall Township	-	40	-	-	10	88	-	138	-	1,076	511,500	21,528	93,946	-	-	-	628,050
Subregion Total	-	845	-	-	411	330	220	1,806	-	320,202	2,362,785	43,137	253,815	-	-	-	2,979,939

Suburban Northampton Area

Municipality	Residential Units								Non-Residential Square Feet								
	AL	APT	CONDO	PRD	TOWN	SFD	TW	Total	AG	COMM	IND	OFF	PUB	REC	RET	TRANS	Total
Bethlehem Township	-	-	-	-	-	168	-	168	-	3,500	500,000	-	267,803	-	-	-	771,303
Forks Township	-	-	108	-	-	72	-	180	-	14,219	563,100	-	-	-	2,198	-	579,517
Palmer Township	-	-	-	-	-	67	-	67	-	82,865	479,001	-	-	-	-	-	561,866
Subregion Total	-	-	108	-	-	307	-	415	-	100,584	1,542,101	-	267,803	-	2,198	-	1,912,686

Region Totals

Municipality	Residential Units								Non-Residential Square Feet								
	AL	APT	CONDO	PRD	TOWN	SFD	TW	Total	AG	COMM	IND	OFF	PUB	REC	RET	TRANS	Total
GRAND TOTAL	-	2,459	108	40	794	1,482	276	5,159	20,160	1,039,578	9,012,058	597,234	1,270,828	181,053	75,213	53,724	12,249,848