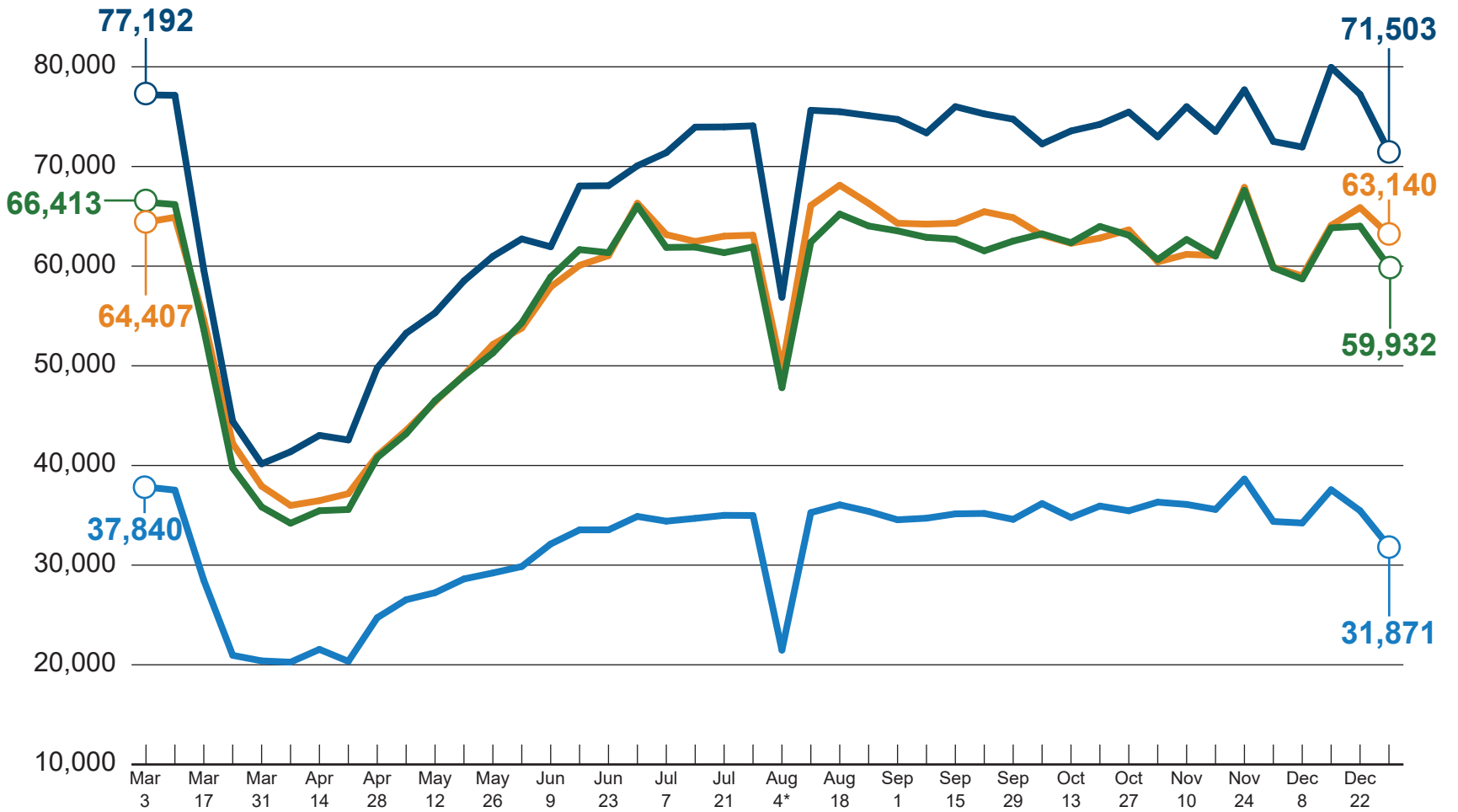


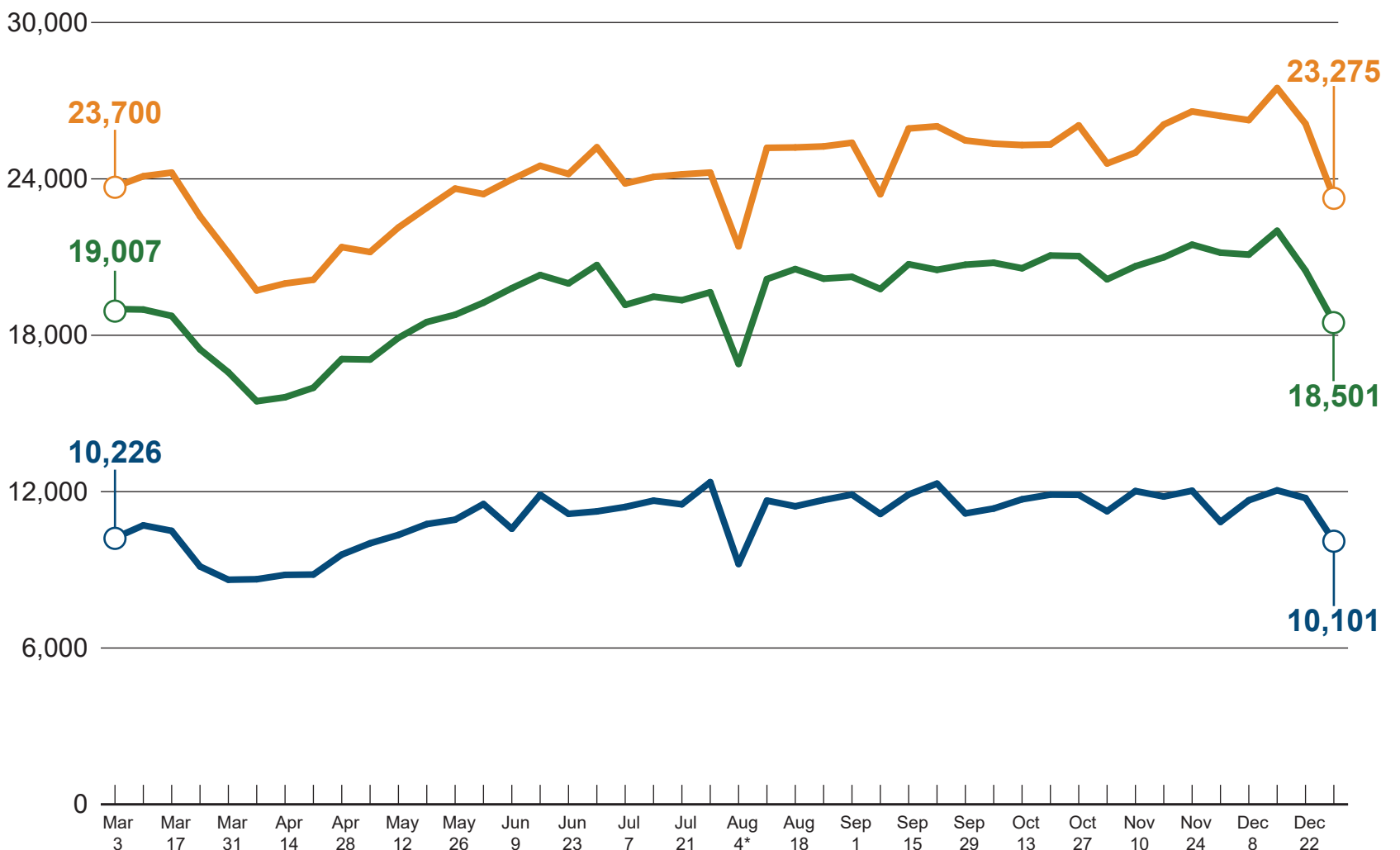
TOTAL VEHICLE TRAFFIC

- State Route 33 between Newburg Road and State Route 248 (Northampton County)
- Interstate-78 just east of the State Route 309 exit (Lehigh County)
- Interstate-78 just east of State Route 33 exit (Northampton County)
- State Route 309 just south of State Route 378 (Lehigh County)



TOTAL TRUCK TRAFFIC

- State Route 33 between Newburg Road and State Route 248 (Northampton County)
- Interstate-78 just east of the State Route 309 exit (Lehigh County)
- Interstate-78 just east of State Route 33 exit (Northampton County)



* August 4 was impacted by Tropical Storm Isaias